

GV56RS Quick Start

Page 1: Basic Operation

1

Check Parts List

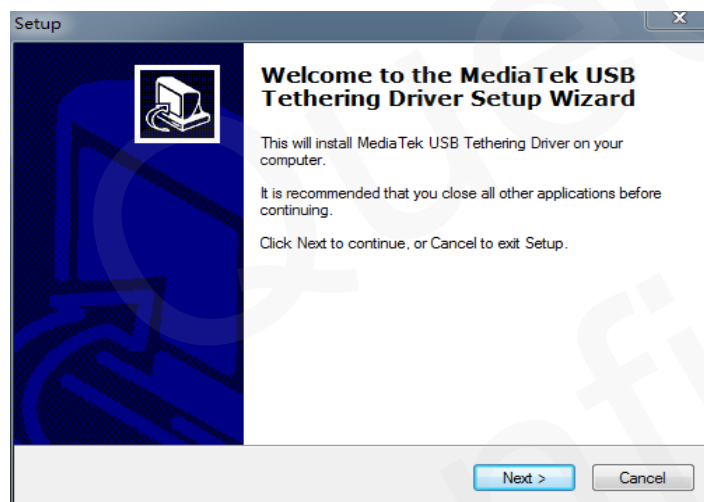


The Data_Cable_M_V4 is not in the delivery list. Please contact your vendor for it.



2

Find "UsbTetheringDriver_exe_v1.1123.00" in developer suite and install the driver. If you have already installed it, please go to Step 3.



3

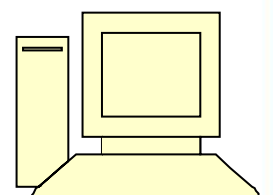
Connect GV56RS to computer by Data_Cable_M_V4.



GV56RS

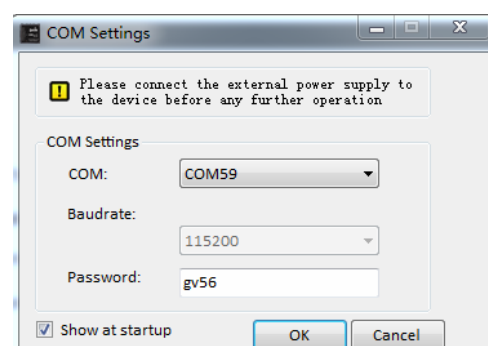


To computer



4

Find "Queclink_GV56RS_Manage_Tool_RX.X.exe" in developer suite and run it to configure the running parameters of GV56RS.



Page 2: PC Manage Tool Quick Start

1

Run Manage Tool. Select correct COM port and input default password “gv56”. Then press OK.

COM Settings

Please connect the external power supply to the device before any further operation

COM Settings

COM:COM28

Baudrate:115200

Password:gv56

☒ Show at startup

OK

Cancel

2

If you want to test GV56RS by SMS, then set “Report Mode” to “SMS” and input the phone number to receive the SMS from GV56RS. After that, you can go to Step 6. Otherwise, please go to Step 3.

Backend Server Configuration is used to configure where and how to report all the messages.

Basic Settings

Report Mode:Force on SMS

Backend Server Settings

Main Server IP / Domain Name:60.174.225.171

Main Server Port:10013

Backup Server IP / Domain Name:

Backup Server Port:0

SMS Gateway:18298268999

Primary DNS server:0.0.0.0

Secondary DNS server:0.0.0.0

SMS ACK Enable

Other Settings

Heartbeat Interval:60 minutes

SACK Enable

Buffer Mode:1. Low priority

Protocol Format:ASCII

Connection Life:30 s

AT+GTSRI=gv56,5,,1,60.174.225.171,10013,,0,18298268999,60,1,0

Read

Send

3

Set “Report Mode” to “TCP Short Connection”. Input the IP address and port number of the backend server. Please make sure the IP address can be accessed over the internet and the data sent to this address can be received.

Backend Server Configuration is used to configure where and how to report all the messages.

Basic Settings

Report Mode:TCP short-connection forced mode

Backend Server Settings

Main Server IP / Domain Name:60.174.225.171

Main Server Port:10013

Backup Server IP / Domain Name:

Backup Server Port:0

SMS Gateway:18298268999

Primary DNS server:0.0.0.0

Secondary DNS server:0.0.0.0

SMS ACK Enable

Other Settings

Heartbeat Interval:60 minutes

SACK Enable

Buffer Mode:1. Low priority

Protocol Format:ASCII

Connection Life:30 s

AT+GTSRI=gv56,2,,1,60.174.225.171,10013,,0,18298268999,60,1,0

Read

Send

4

Please contact your SIM card provider and get the APN information for GPRS. Input it in GTBSI setting.

Bearer Setting Information is used to configure the GPRS parameters.

GPRS Settings

APN:cmnet

User name:

Password:

AT+GTBSI=gv56,cmnet,,,,,FFFF\$

Read

Send


5

Press the “Send” button and update the parameters of GV56RS. Then GV56RS can report information to your backend server or SMS receiver. Note: These commands can also be sent to GV56RS by SMS.

AT+GTBSI=gv56,cmnet,,,,,FFFF\$

Command has been accepted when you see the window below.

GV56RS Manage Tool

 Saving all configuration is successful!

OK

6

Set the parameters of fixed time report so that GV56RS will report its position to backend server periodically. Press “Send” button to update the parameters. The following screenshot shows how to configure GV56RS to report its position every 3 minutes.

Fixed Report Information is used to configure the parameters of scheduled report.

Basic Settings

Mode:Fixed Timing Report

Send Interval:180 seconds

IGF Report Interval:180 seconds

ERI Mask:☐ Reserved
☐ for <AC100 Data> field in the report message +RESP:GTERI

Report Period Settings

Period Enable

Start Time:0000 HH-MM

End Time:0000 HH-MM

Mileage Settings

Distance:1000 meters

Mileage:1000 meters

Other Settings

Discard No Fix

AT+GTFRI=gv56,1,0,,1,0000,0000,,180,1000,1000,,0,180,00000000

Read

Send

7

The following screenshot shows how to create a Geo-Fence rule. Press “Send” button to update the parameters.

Geo-Fence Configuration is used to configure the parameters of Geo-Fence.

GeoFence Settings

GEO ID:0

Mode:Both entering and exiting

Latitude:31.838122

Longitude:117.129310

Radius:500 meters

Check Interval:30 seconds

Output Settings

Output ID:1

Output Status

Duration:0 x100ms

Toggle Times:0

Trigger Mode:Disable auto trigger mode

Trigger Report:Disable

State Mode:The device should report when getting the GEO state for the first time

AT+GTGEO=gv56,0,3,117.129310,31.838122,500,30,1,1,0,0,0,0,,1

Read

Send

After these steps, GV56RS will have some basic tracking functions like fixed time report and Geo-Fence. For other advanced functions of GV56RS, please refer to “GV56RS @Track Air Interface Protocol” or visit our website.

http://www.queclink.com
sales@queclink.com

Queclink
Grace Wang Checked
2019.07.03