

## GL502MG Quick Start V1.00

### Page 1: Basic Operation

1

Check Parts List  
cable (ordered separately).



2

Check The Appearance



3

Use a magnet to approach magnetic reed switch. Then the switch will be triggered and the device will be powered on. To power on the device, set the battery switch on the PCB to ON position first.

Magnetic Reed Switch



4

Open GL502MG and take out the PCB and battery. Connect GL502MG to your computer with Type-C data



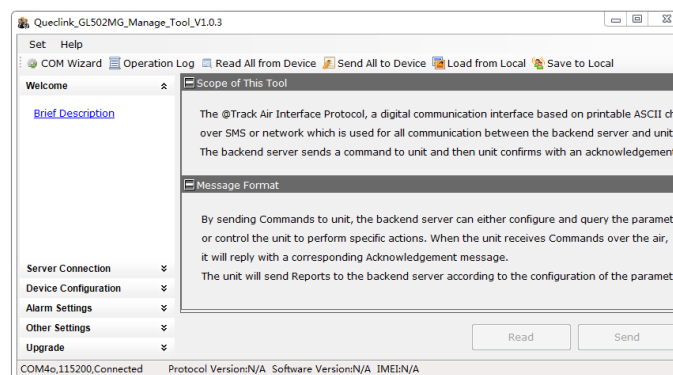
5

Find "PL2303\_Prolific\_DriverInstaller\_vxxxx" and choose the suitable driver for your computer system. If you have already installed it, please go to Step 6.



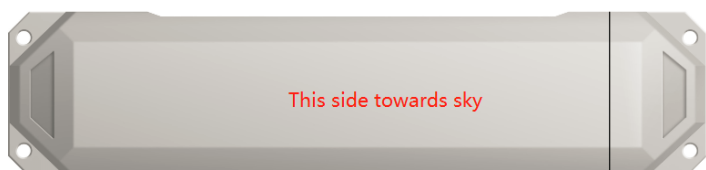
6

Find "Queclink\_GL502MG\_Manage\_Tool\_Vx.xx.exe" in developer suite and run it to configure the parameters of GL502MG. Please refer to Page 2 for details.



7

Better place the GL502MG under the open sky and let the surface face the sky.



## Page 2: PC Manage Tool Quick Start

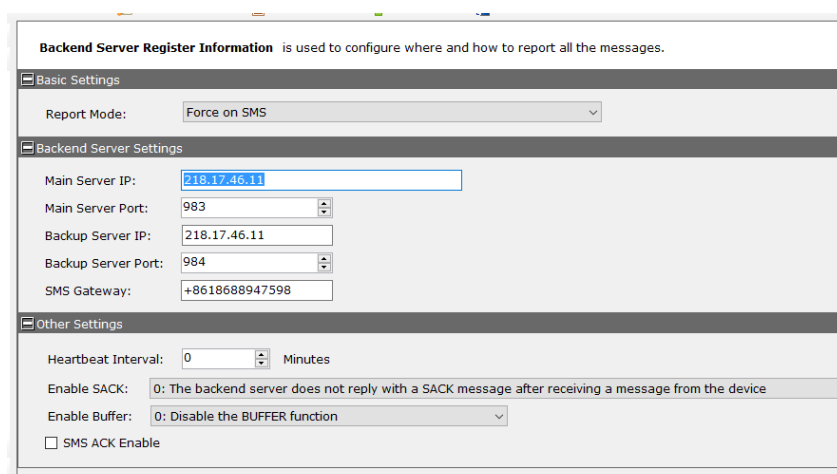
1

Run the Manage Tool. Select correct COM port and input default password “gl502m”. Then press “Try to Connect” and “OK”.



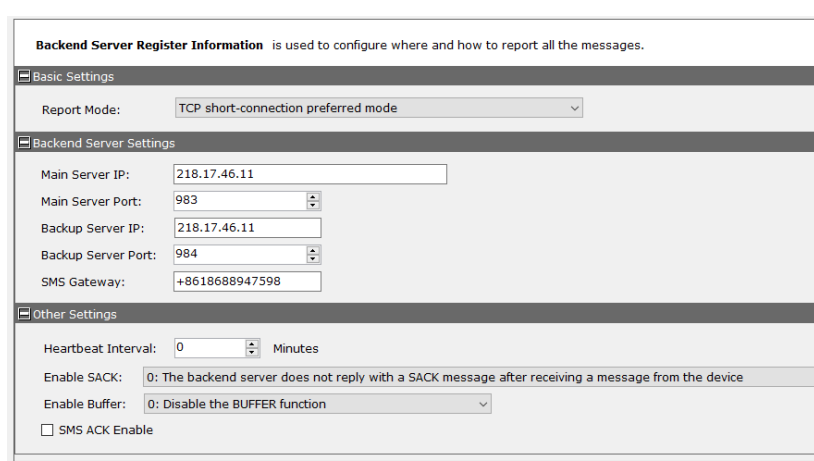
2

If you want to test the GL502MG via SMS, set “Report Mode” to “Force on SMS” and input the phone number to receive the SMS from GL502MG. After that, go to Step 6. Otherwise, please go to Step 3.



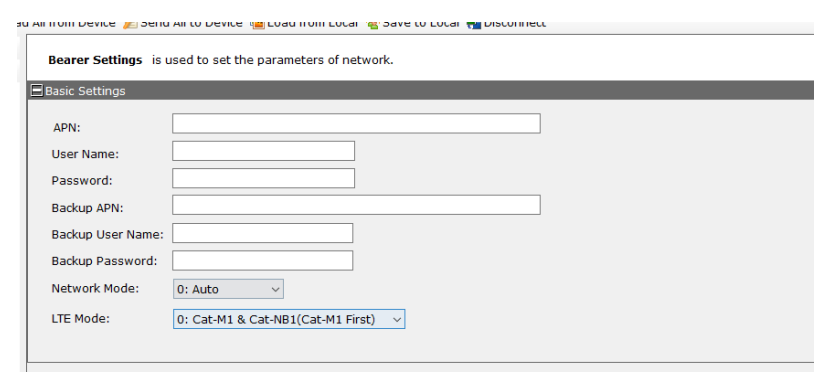
3

Set “Report Mode” to “TCP Short Connection”. Input the IP address and port number of the backend server. Please make sure the IP address can be accessed over the internet and the data sent to this address can be received.



4

Please contact your SIM card provider to get the user information for network. Input it in GTBSI setting.

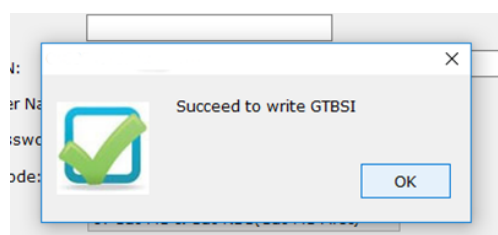


5

Press “Send” button and update the parameters of GL502MG. Then the GL502MG can report information to your backend server or SMS receiver. Note: These commands can also be sent to GL502MG via network or SMS.

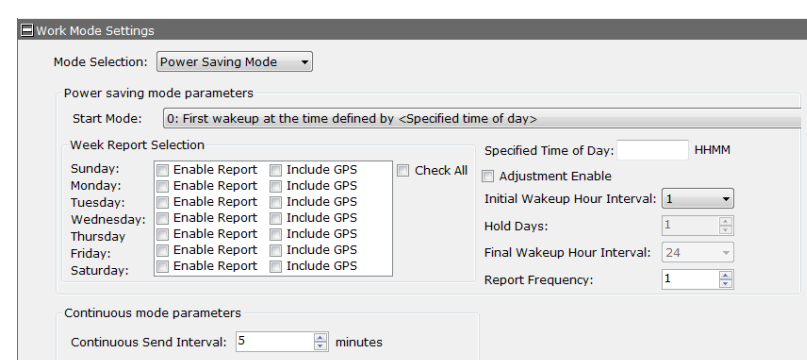


Command has been accepted when you see the window shown below.



6

Set the parameters of fixed time report so that the GL502MG will report its position to backend server periodically. Press “Send” button to update the parameters.



After these steps, GL502MG will have some basic tracking function such as fixed time report. For other advanced functions of GL502MG, please refer to “GL502MG @Track Air Interface Protocol” or visit our website.

<http://www.queclink.com>

[sales@queclink.com](mailto:sales@queclink.com)