

GV350CEU Quick Start

Page 1: Basic Operation

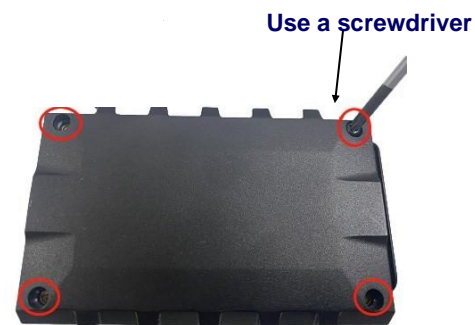
1

Check Parts List



2

Open the case



3

Install a SIM Card

Install the battery



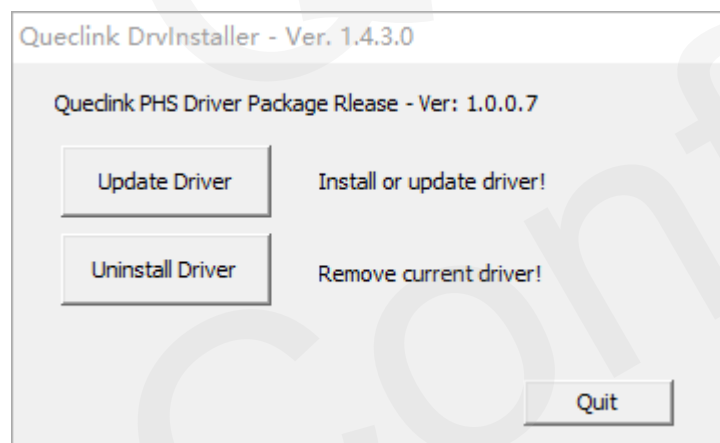
4

Close the case



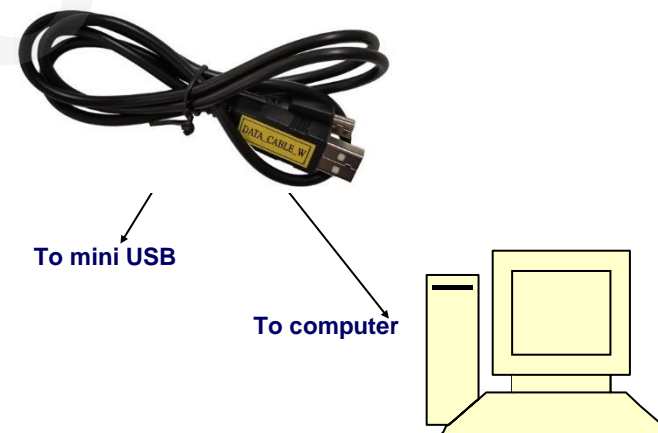
5

Find Queclink_Driver_AsrV2.0.1.0.zip in develop suit and install the driver. If you have already installed it, please go to Step 6.



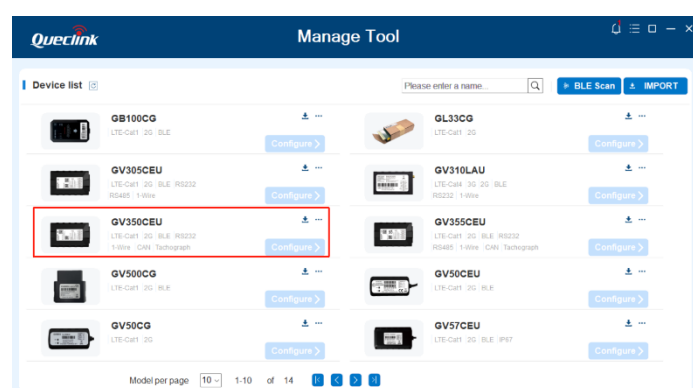
6

Connect GV350CEU to computer by USB Data_Cable_W.



7

Find "Queclink @Track MT Setup Vx.x.x.exe" in develop suit and run it to configure the running parameters of GV350CEU. Please refer to "PC Manage Tool Quick Start" for details.



8

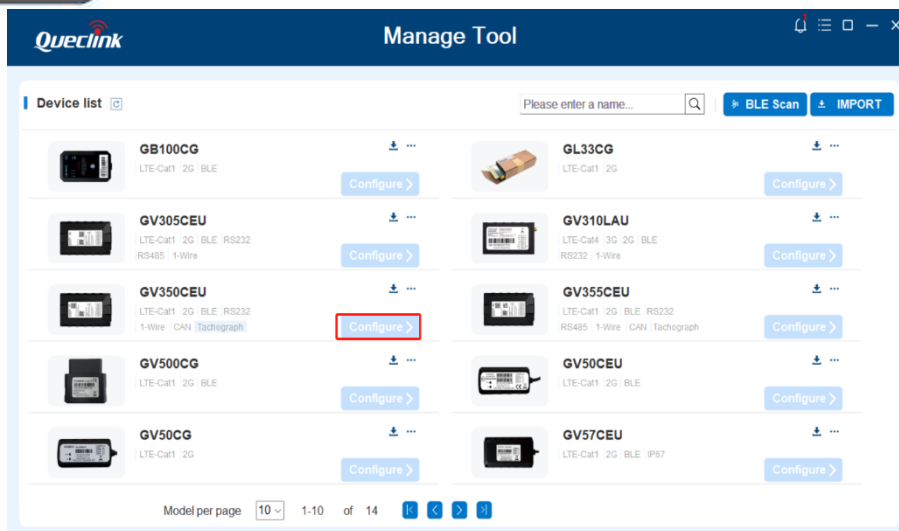
Before using GV350CEU for the first time, please fully charge the battery.



Page 2: PC Manage Tool Quick Start

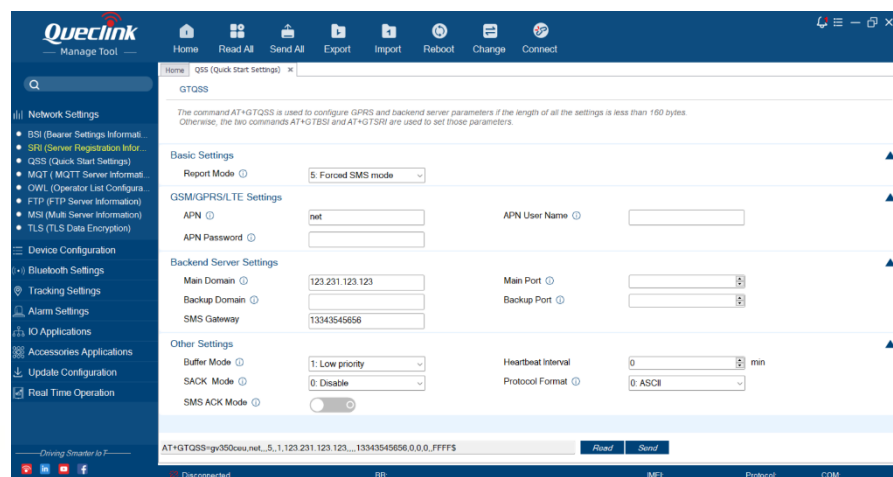
1

If the driver is already installed, MT will recognize it automatically. Then click **Configure**.



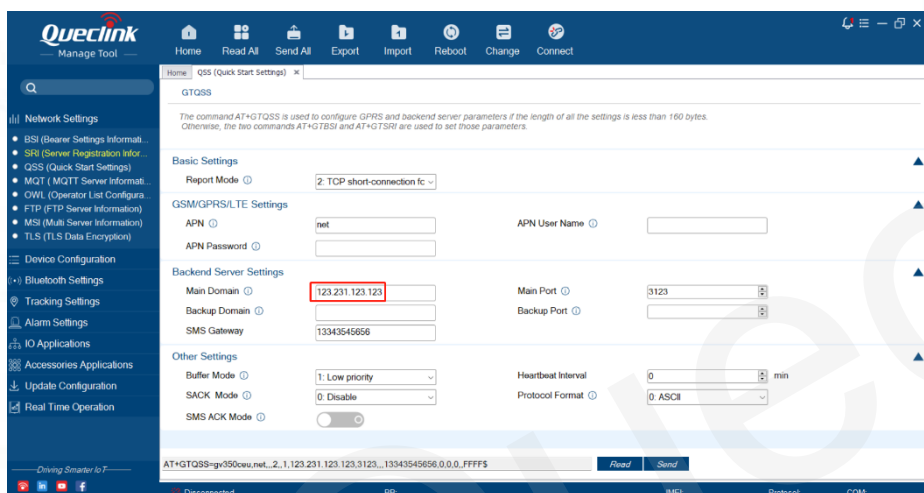
2

If you want to test the GV350CEU by SMS. Then set **“Report Mode”** to **“SMS”** and input the phone number which you want to receive the SMS from GV350CEU. After that you can go to **Step 6**.



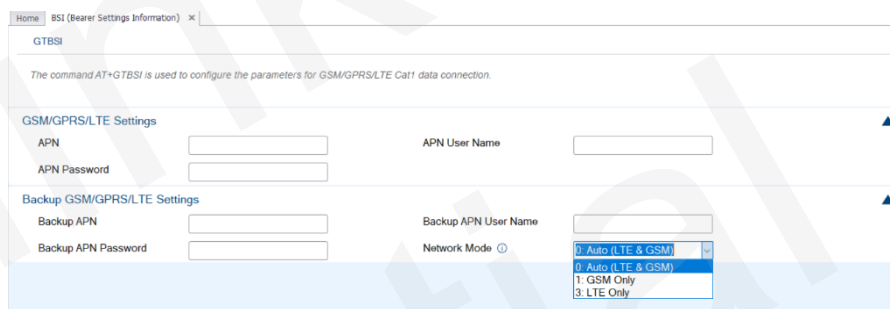
3

Set **“Report Mode”** to **“TCP Short Connection”**. Input the IP address and port number of the backend server. Please make sure the IP address can be accessed by internet and the data sent to this address can be received.



4

Please contact your SIM card provider and get the APN information for GPRS. Input it in **AT+GTBSI** setting.



5

Click the **“Send”** button and update the parameters of GV350CEU. Then GV350CEU can report information to your backend server or SMS receiver.
Note: These commands can also be sent to GV350CEU by SMS.

AT+GTBSI=gv350ceu.net,,,,,0,,,FFFF\$

Command has been accepted when you see the window below.

Queclink @Track MT

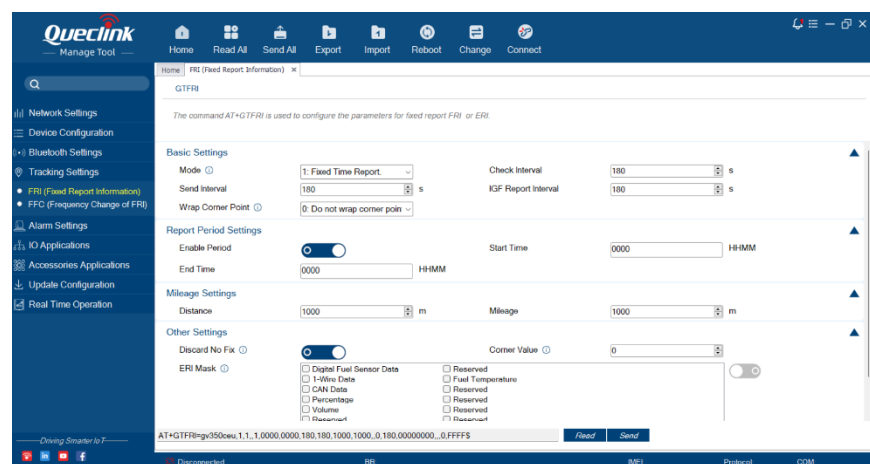


Save settings successfully

OK

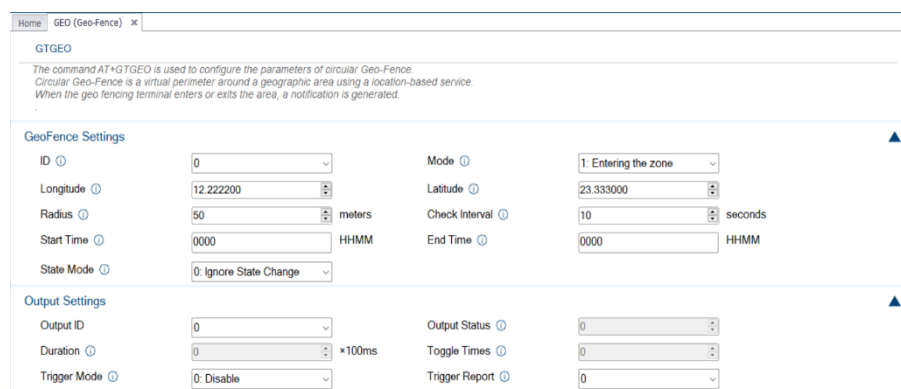
6

Set the parameters of fixed time report so that GV350CEU will report its position to backend server periodically. Click **“Send”** button to update the parameters.
The following screenshot shows how to configure GV350CEU to report its position every 3 minutes.



7

The following screenshot shows how to create a Geo-Fence rule. Click **“Send”** button to update the parameters.



After these steps, GV350CEU will have some basic tracking functions like fixed time report and Geo-Fence. For other advanced functions of GV350CEU, please refer to [GV350CEU @Track Air Interface Protocol](http://www.queclink.com) or visit our website.

<http://www.queclink.com>
sales@queclink.com