

GV300CAN Quick Start

Page 1: Basic Operation

1

Check Parts List

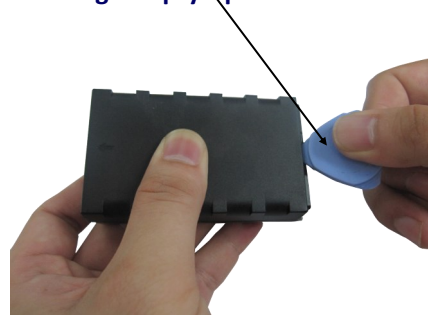


The MiniUSB_Data_Cable is not in the delivery list. Please contact your vendor for it.

2

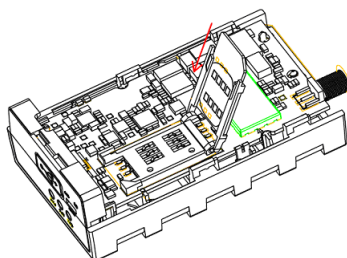
Open the Case

triangular-pry-opener



3

Install SIM Card



Install the Battery



4

Close the Case



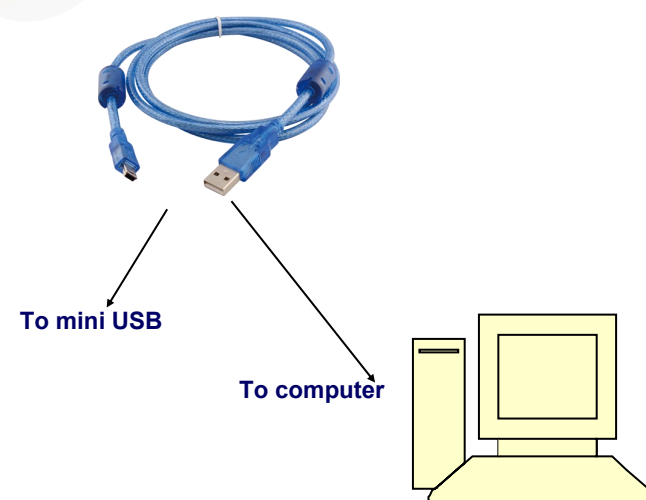
5

Find "MS_USB_ComPort_Driver_exe_v1.1032.3" in developer suite and install the drive for PL2303. If you have already installed it, please go to Step 6.



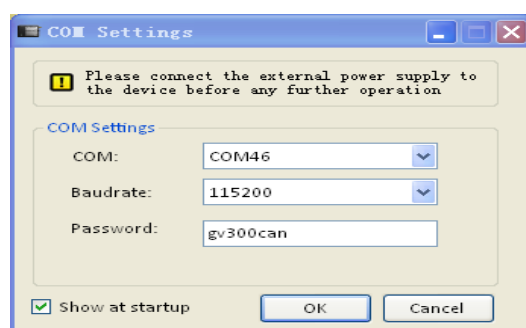
6

Connect GV300CAN to computer with MiniUSB_Data_Cable.



7

Find "Queclink_GV300CAN_Manage Tool_Rx.xx.exe" in developer suite and run it to configure the running parameters of GV300CAN.



8

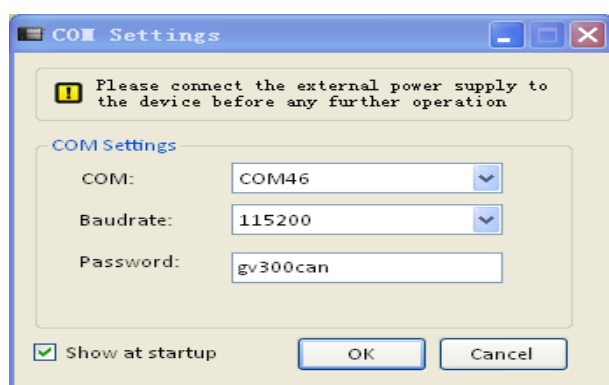
Before using GV300CAN for the first time, please fully charge the battery. Please refer to Page 2 for details.



Page 2: PC Manage Tool Quick Start

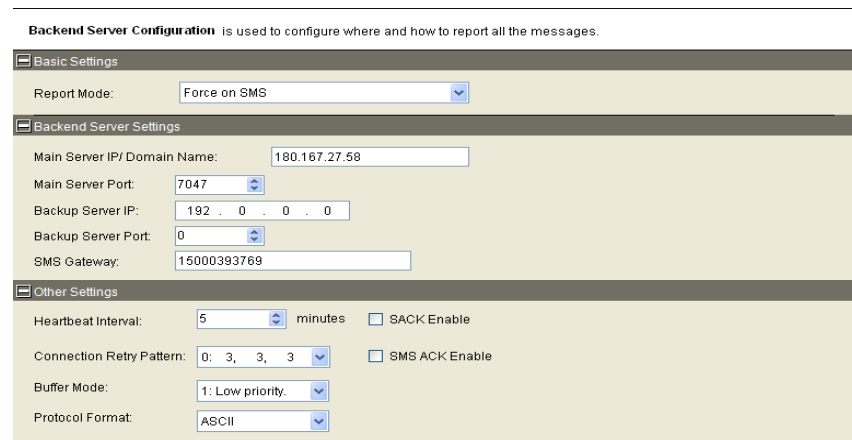
1

Run the Manage Tool. Select correct COM port and input default password "gv300can". Then press OK.



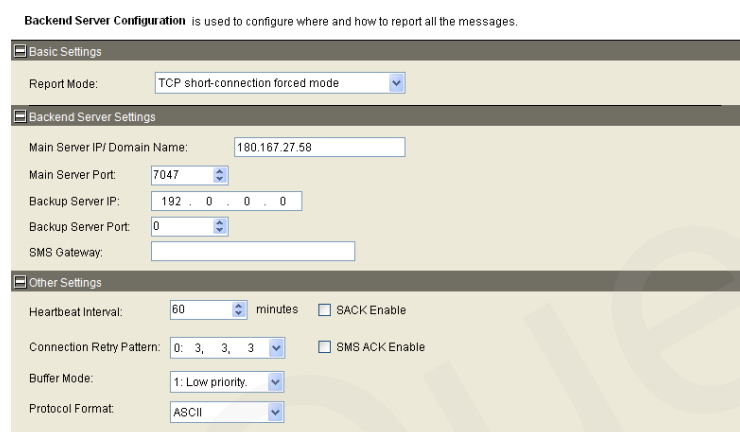
2

If you want to test GV300CAN by SMS, then set "Report Mode" to "SMS" and input the phone number intended to receive the SMS from GV300CAN. After that, you can go to Step 6. Otherwise, please go to Step 3.



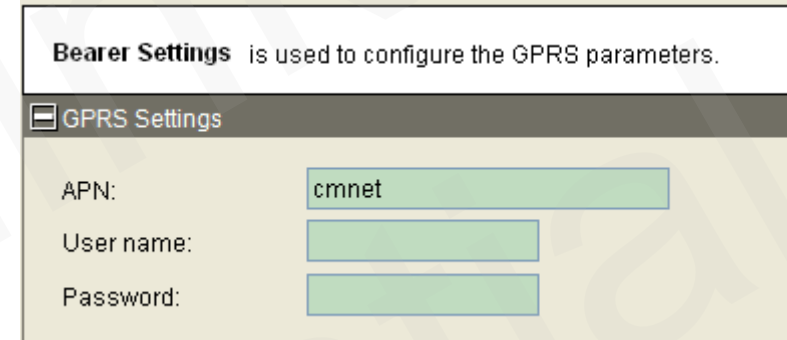
3

Set "Report Mode" to "TCP Short Connection". Input the IP address and port number of the backend server. Please make sure the IP address can be accessed over internet and the data sent to this address can be received.



4

Please contact your SIM card provider and get the APN information for GPRS. Input it in AT+GTBSI setting.



5

Press the "Send" button and update the parameters of GV300CAN. Then GV300CAN can report information to your backend server or SMS receiver.

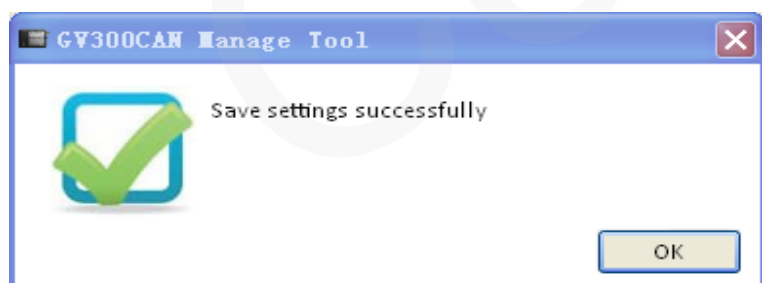
Note: These commands can also be sent to GV300CAN by SMS.

AT+GTBSI=gv300can,cmnet,,,,,FFFF\$

Read

Send

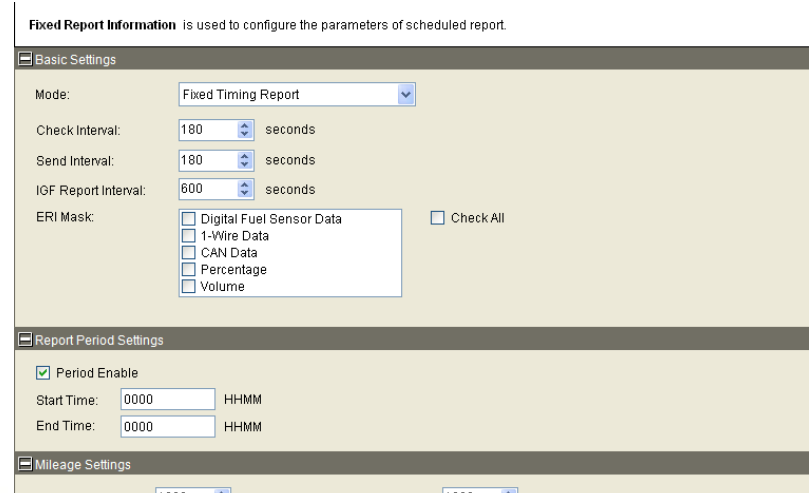
Command has been accepted when you see the window below.



6

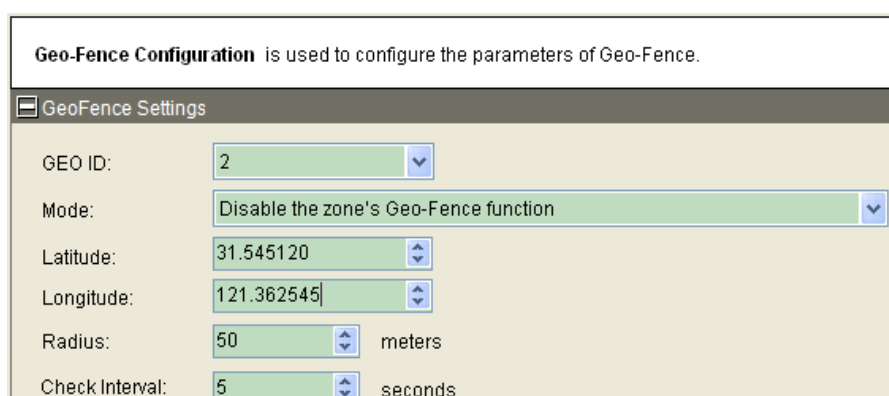
Set the parameters of fixed time report so that GV300CAN will report its position to the backend server periodically. Press "Send" button to update the parameters.

The following screenshot shows how to configure GV300CAN to report its position every 3 minutes.



7

The following screenshot shows how to create a Geo-Fence rule. Press "Send" button to update the parameters.



After these steps, GV300CAN will have some basic tracking functions like fixed time report and Geo-Fence. For other advanced functions of GV300CAN, please refer to "GV300CAN @Track Air Interface Protocol" or visit our website.

<http://www.queclink.com>
sales@queclink.com

Queclink
Rita Pan
2022.08.19