



## GB100CG

### LTE CAT 1 Battery Mounted Tracker for UBI/Insurance Telematics

70.5g (2.5oz)



96(L) × 56(W) × 12(H) mm  
3.8" x 2.2" x 0.5"



-20°C ~ +70°C



Operating Voltage: 8V ~ 32V DC  
Backup Battery: NiMH, 3.6V, 200 mAh



LTE CAT 1 with 2G Fallback



IP67 Waterproof



Compact Size



High Temperature NiMH  
Backup Battery



BLE 5.2



Jamming Detection



Scheduled Report



Geo-Fences



Motion Detection



Driving Behavior Monitoring



Crash Detection & Accident  
Reconstruction



Tow Alarm



OTA Control

The GB100CG is an upgraded version of the GB100 battery powered series that integrates LTE Cat1 technology. In addition to its compact and IP67 waterproof design, the GB100CG is easy to install on various types of vehicles with a 2-wire connection. The product features a 6-axis sensor and up to 1600Hz sampling rate, providing functions such as driver behaviour monitoring, crash detection and mileage logging, making it well suited for insurance applications and connected car services.



UBI/Insurance Telematics



Connected Vehicles



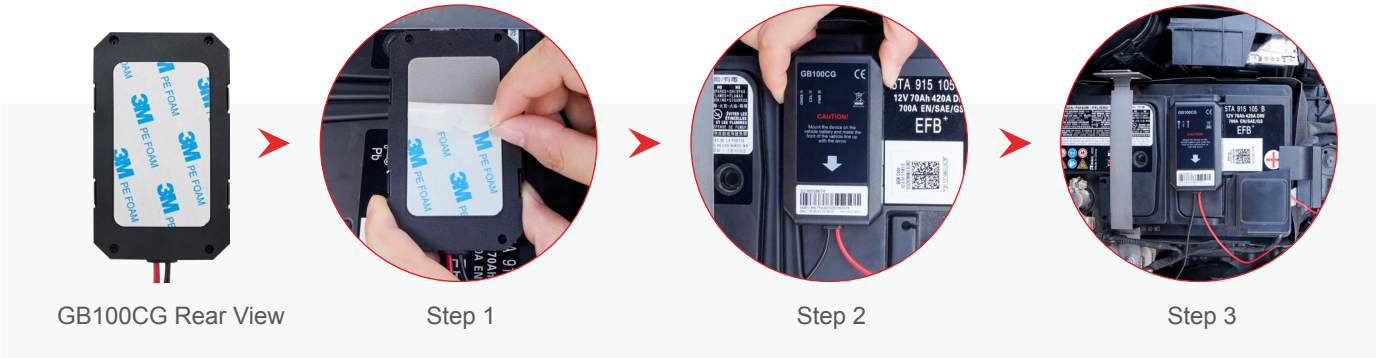
Automobile Finance



GB100CG

Region	Operating Band	GNSS Type	Position Accuracy (CEP)	Certificate
EMEA, LATAM	LTE-FDD: B1/B2/B3/B4/B5/B7/B8/B20/B28 GSM: 850/900/1800/1900MHz	All-in-One GNSS receiver	Autonomous: < 2m	CE/UKCA/E-Mark

Installation Guide



Interfaces

Motion sensor	3-axis accelerometer + 3-axis gyroscopes
SIM Card	Nano SIM card slot or eSIM
USB	Micro USB
LED indicator	GNSS/CEL/PWR
CEL ANT	Internal
GNSS ANT	Internal

## Configuration and Upgrade Cable



### **Data\_Cable\_M\_V4**

It is used for configuration and firmware upgrade.